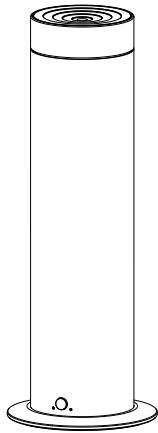


S150(Bluetooth) User Manual



Download app

Please read the user manual carefully before using the product and keep it in a safe place.

Safety Precautions:

- 1: Do not use overloaded power supplies, sockets, and damaged power cords and plugs. If used, it may endanger your safety and may cause fire. If this happens, please promptly report to the sales or after-sales department and request replacement.
- 2: Please do not open the inside of the device to avoid the device damage. If the device works in error, please read the user manual carefully, follow the normal procedure or consult sales and after-sales.
- 3: When the device is working, do not disassemble the device or shake the device vigorously, to avoid the device to work abnormally.
- 4: Do not put the device or power adapter in water or watering, do not use a watering power adapter.
- 5: When the device is already filled with liquid (essential oil), do not invert, tilt or rotate the device to device liquid spillage and damage the device.
- 6: When encountering natural weather thunder, do not operate the device or touch the power cord to avoid the risk of electric shock.

Product Instruction:

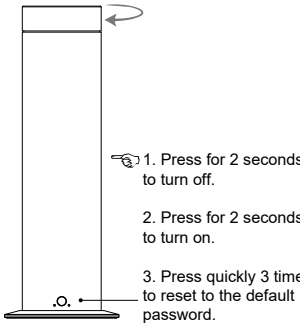
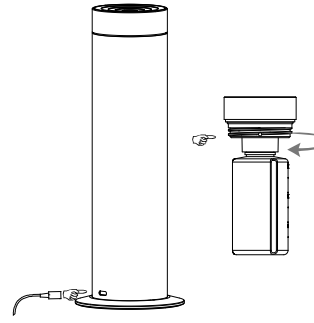
The S150 adopts industry-leading second-generation silent patented cold misting technology, ensuring silent, fine and even mist particles. It features a threaded easy installation. With a 150ml capacity, it reduces the frequency of oil changes. With our specially developed anti-leak technology, there's no worry about spills, even if the device tips over. Compact and elegant, the S150 is perfect for bedrooms, hotels, spas, cinemas, and other fragrance-focused spaces.

Product Specification:

Model No	S150	Machine Size	φ95*259mm
Oil Capacity	150ml	N.W	663.7g
Coverage Area	100m²/300m³	Voltage	DC5V1A
Power	2W	Noise	<30db
Oil Consumption	0.8g/h	Install Method	Desktop

Oil consumption means: the device in the maximum setting, the test oil is Shangri-La, the test oil consistency is 9.5MPa.S, the room temperature is 30℃, the air humidity is 45%. Above is for reference.

Install Instruction:

	
1. Connect the power supply to start the mist.	3. Rotate counterclockwise to remove the oil bottle, add oil, tighten clockwise, and install into the device.
2. Rotate counterclockwise to remove the atomizer head and oil bottle.	

User Manual

1. Scan the QR code of the cover or search the "Scent Master" app in the app store to download and install.

2. Open the app homepage interface, click [Stand Alone Mode] (as shown in Figure 1)

3. Click the search device to pop up the password input dialog box and enter the initial password 9999 (as shown in Figure 2)

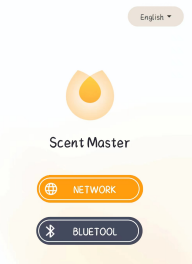


Figure 1

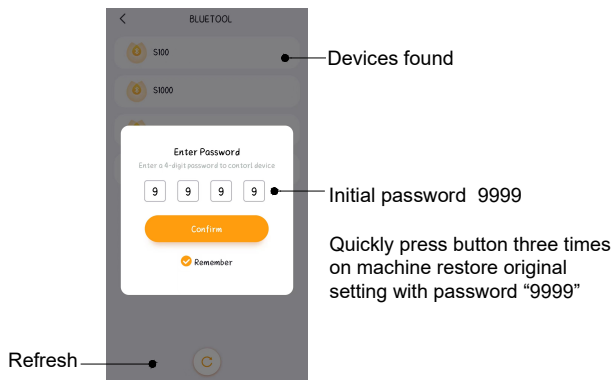
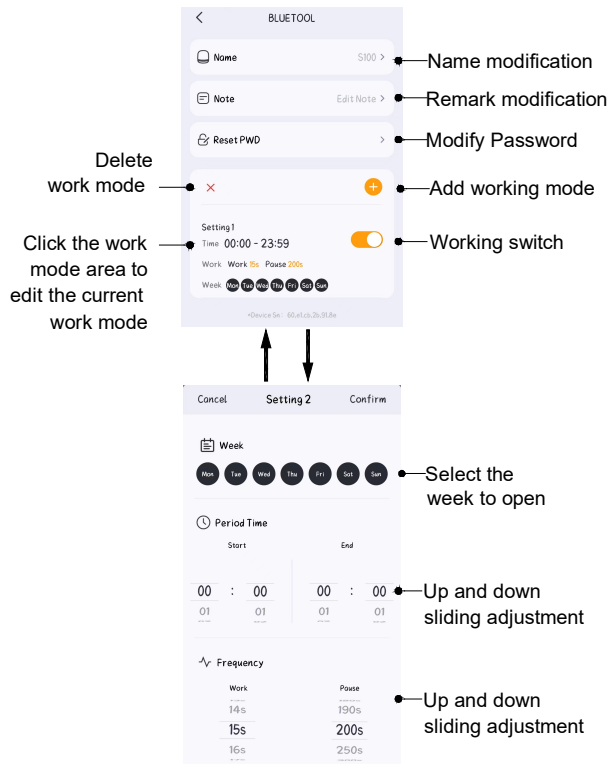


Figure 2

4. Working settings



Device Maintains:

Maintain the device every 6 months, or replace the essential oil if the scent weaker.

1. Open the device cover, take off the oil bottle.
2. Each time replace the essential oil, should clean the oil pipe filter.
3. Pour an appropriate amount of alcohol into the essential oil bottle and clean it;
4. Check whether the nozzle of atomizing core is clean. If there is blackening and powder accumulation, it can be removed with toothpick or paper towel;

Fault Resolution:

Device Fault	Solution
Device not work	-Check if use wrong power supply. -Check if the power is on. -Check the setting of device work time.
No atomization	-Check if the pump work normally, if the the nozzle of atomizing core blocked. -Check if the fog outlet seal ring broken or fall off. -Check if the oil pipe blocked or fall off.
Weak atomization	-Check if the seal ring of fog outlet pipe damage. -Check if the nozzle blocked. -Check if the connection of atomizing core and atomizer loose.
Oil leak	-Check if the atomizer broken. -Check if the gasket broken and need to replace. -Check if the connection of oil bottle and atomizer close tighten.
Abnormal noise	-Pump loose, fix the pump. -Pump broken, change new pump. -Check if the fan fixed well.

Packing Accessories:

	
Power Supply	User Manual

After Sale Service:

The warranty period of the equipment is 1 year from the date of sale. Easily damaged accessories such as housing, wire and outer pipe are not covered by the warranty, and man-made damage and accident damage are not covered by the warranty. If the warranty period is exceeded, we will charge maintenance fees.

Warranty Card:

Maintain Date	Maintain Item	Maintain Company	Maintain Staff