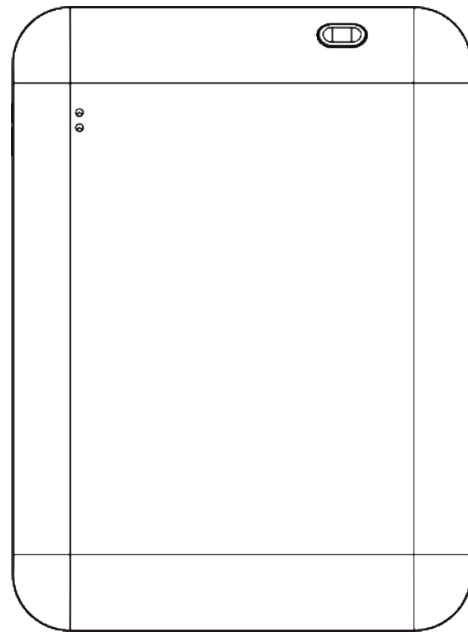


# USER MANUAL



APP ICON:



Remark: Scan the QR code to download, Or Apple users search Arom IOT in the Apple Store. Android users search Aroma IOT in Google Play to download.

APP download

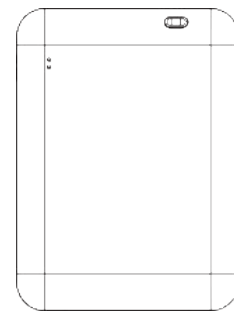


PC Management Background



Remark: The device administrator adds scent name through PC Management Background - consume center-consume lib-add consume. After unifying the name of the scent type, we can choose it on the mobile APP to make group management.

## PRODUCT MANUAL



Model No.: 200A

Product Size: 165\*121\*60mm

Voltage: DC6V

Power: 1.6W

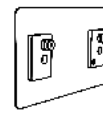
Coverage: 100-300m<sup>3</sup>

Capacity: 170ml

Product Weight: 338g



Atomizer head  
+ Oil bottle



Hanging  
board



Screw



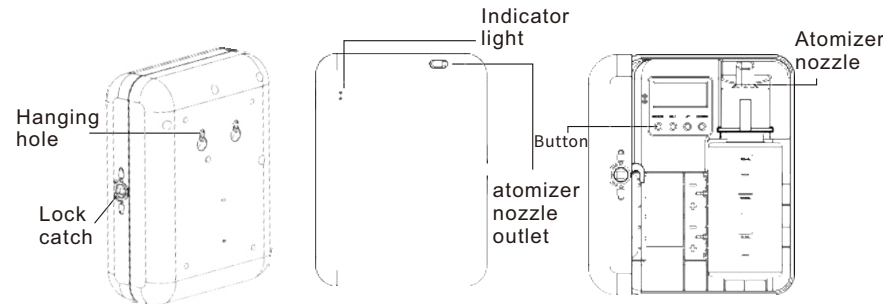
Power adapter  
(Optional)



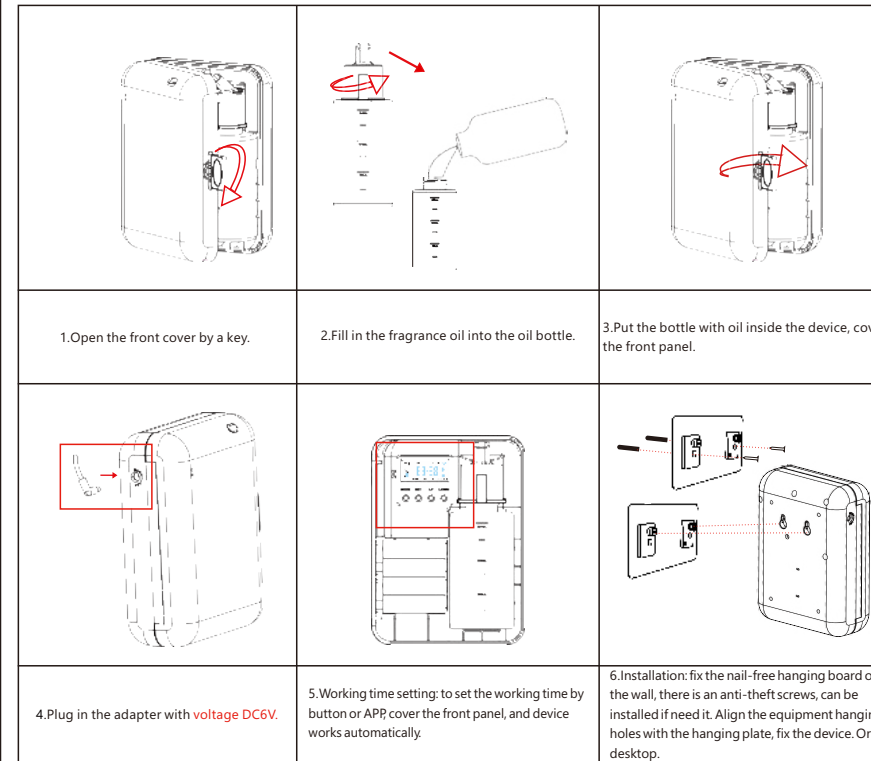
Key



User Manual



## INSTALLATION PROCEDURE



**WARNING** If you are not a technician, shall not modify, disassemble or repair the device. If the device is faulty, please contact technical staff in time.

**Battery life** (Battery capacity is 3000mAh, experimental data for reference only)

Spray time(s)/Pause time(s)	5/120	5/300	5/500	5/900	2/900
Working time per day(h)	10	10	10	10	10
Days(d)	25	60	100	178	442

## EQUIPMENT MAINTENANCE

**When the following happens, the device needs to be cleaned**

1. You are going to change another fragrance oil to use;
2. The amount of atomizing is getting weaker and weaker;

### Cleaning steps

1. Take off the atomizer head, take out the oil bottle;
2. Fill appropriate amount of alcohol into the oil bottle, install it in the device to work 5-10 times to prevent cross-odor;
3. Cleaning is finished after oil bottle drying.

### Troubleshooting

Before repairing the device, try to solve the problems according to the following methods.

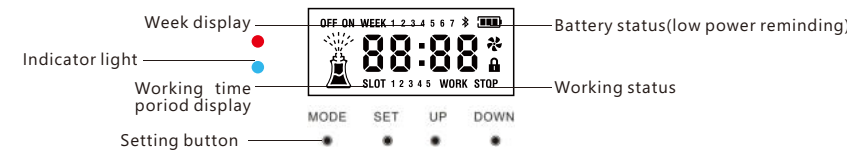
Problem	Solution
No fogging	<ol style="list-style-type: none"><li>1. Check the power supply to see whether the positive and negative poles of the battery are reversed or the power adapter is not suitable.</li><li>2. Check whether the device is in "PAUSE" state.</li><li>3. Check whether the atomizing piece is workable or broken.</li><li>4. Check whether the copper contacts between the atomizing head and the fuselage are in good contact.</li></ol>
Small fog	<ol style="list-style-type: none"><li>1. Check whether the cotton wick is soaked in essential oil and inserted correctly and in good contact with the atomizing piece.</li><li>2. Check whether the atomizing piece is blocked or has foreign matter.</li><li>3. Check whether the essential oil level is too low.</li></ol>
Oil leak	<ol style="list-style-type: none"><li>1. Check whether the fuselage is tilted and the oil bottle is damaged.</li><li>2. Check whether the gasket is damaged and needs to be replaced.</li><li>3. Check whether the oil bottle and atomizing head are twisted or tightened parallel.</li></ol>

### After-sales service

- ◆ Device from the date of sale, one year warranty, but not warranty shell, wire, ultrasonic module and external vulnerable items, man-made or accidental damage is not within the scope of warranty, beyond the free warranty period, paid maintenance.
- ◆ If you encounter any after-sales problems, you can contact the authorized sales service providers in each region, or contact our sales center.

## BUTTON OPERATION INSTRUCTION

### Main Menu Display:



### Button function:

- 【MODE】 long press: Factory reset;  
Short press: working time setting;
- 【SET】 Short press: Toggle settings options;
- 【UP】 long press: testing device;  
Short press: Increase “+”;
- 【DOWN】 long press: lock/unlock the device;  
Short press: Decrease “-”;

### Button control operation:

1. **Power on:** Plug in the adapter with voltage DC6V, the indicator light is on means device are ready to work, the time, working status and working mode display on the screen.



Default device screen

2. **Local time setting:** On the default device screen, press SET firstly to enter the hour setting screen, press SET secondly to switch the minute setting, press SET thirdly to switch the week setting, and corresponding display number will flash respectively, press UP/DOWN to adjust the correct number. Press SET fourthly back to the home page. The local time is setted successfully.



Local time setting screen

### 3. Working time setting and fragrance frequency setting:

- Press MODE button firstly**, the screen displays SLOT 1, indicating the start time of the first working period. Press SET to switch the hour, minute and date settings(digits will flash), and press UP/DOWN to adjust. There are a variety of date combinations: (Monday); (Tuesday);(Wednesday);(Thursday);(Friday); (Saturday);(Sunday);(Tuesday to Thursday); (Saturday to Sunday);(Monday, Wednesday and Friday); (Tuesday Thursday Saturday).



Start working time setting page

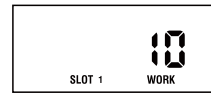
## BUTTON OPERATION INSTRUCTION

- Press MODE secondly**, the screen displays SLOT 1 OFF means the SLOT 1 working period is off. Press SET to switch the hour, minute(digits will flash), press UP/DOWN to adjust.



Stop working time setting page

- Press MODE thirdly**, the screen displays SLOT 1 WORK means each spray time setting, from 2s - 10s to choose, press UP/DOWN to adjust.



Each spray time setting page

- Press MODE fourthly**, the screen display SLOT 1 STOP, mean each pause time setting, from 120s to 900s to choose, press UP/DOWN to adjust. SLOT 1 working period setting is done. Press MODE five times or wait for 8s, the screen will back to main menu.



Each pause time setting page

- Press MODE 5 times** to set SLOT 2 working period, and the screen display SLOT 2 ON, press SET to adjust, press UP/DOWN to set the hour, minute and date. Repeat above steps to finish the setting. 5 different working periods can be setted.

### Remark:

- Time off can not earlier than time on when the working time setting. If time on and time off including 00:00, need to make it into two periods.  
For example: working time need to be setted from 21:00 to 9:00  
The first working time period: 21:00 - 23:59  
The second working time period: 00:01 - 9:00

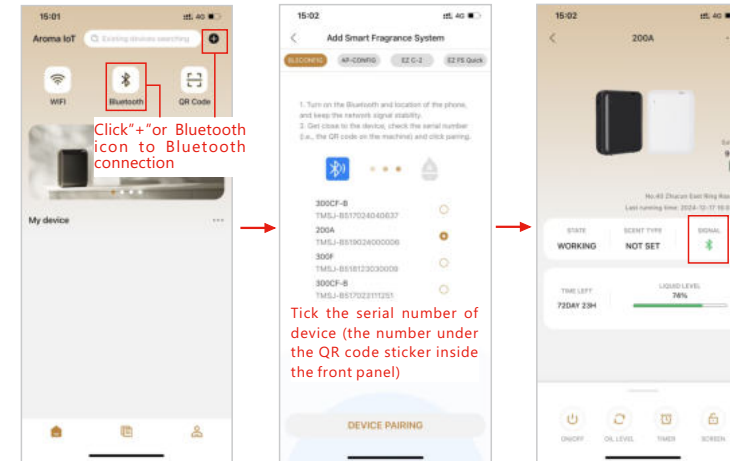
Each spray time(S)	2s-10s to choose
Each pause time(S)	120s-900s to choose

## APP OPERATION INSTRUCTION

- Step 1: Turn on the APP Aroma IOT, login(Remark: need to register the account in the APP before login)**

### Step 2: Bluetooth connection

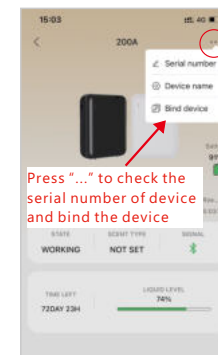
- Remark:** Turn on the Bluetooth and location on the phone and make sure the WIFI signal is available, click “+” or Bluetooth icon enter the pairing page, find and tick the serial number that is under the QR code sticker inside the front panel of device. Press PAIRING enter the setting page.



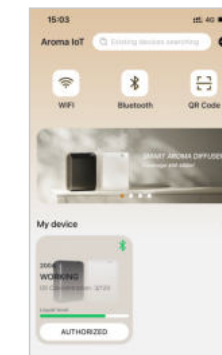
(1) Connection home page

(2) Pairing Page

(3) Setting page



(4) Bind device page

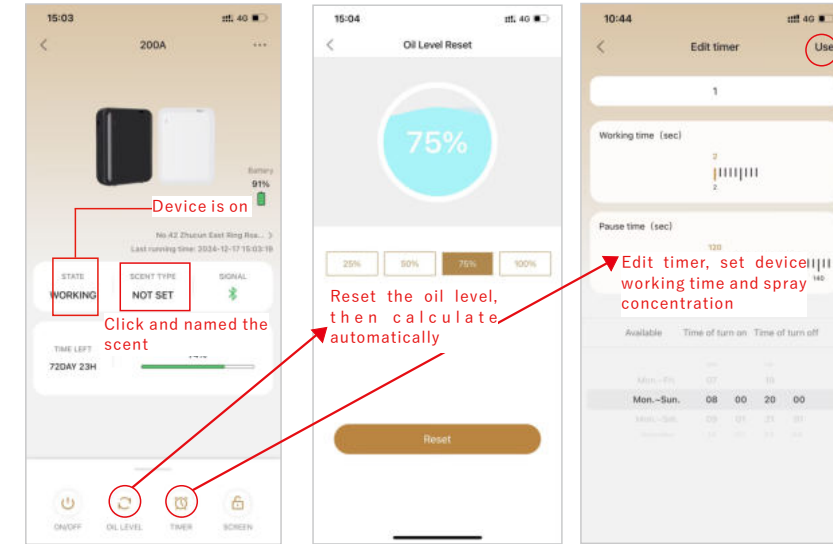


(5) Home page, the device can be saw after being bound

- Remark:** People need to be authorized to use the device if the device is bound, otherwise not.

## APP OPERATION INSTRUCTION

### Setting:

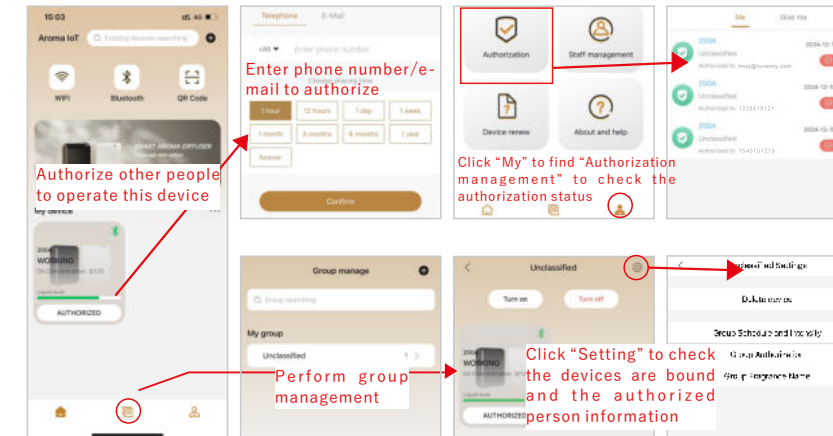


Device page

Oil level page

Timer page

### Authorization and group setting method



Enter phone number/e-mail to authorize

Authorize other people to operate this device

Click “My” to find “Authorization management” to check the authorization status

Perform group management

Click “Setting” to check the devices are bound and the authorized person information